

Nebula Kiosk tablet



GAD101-A

NEB156

NEB215



Commercial grade

all-in-one



Product overview

The Nebula series is a tablet design for commercial industries. The all in one capabilities allows for integrated capacitive touch along with a powerful RK3288 CPU processor at 1.6GHz. Nebula runs on the android OS in which can provide high flexibility and speed to market design for application. With full viewing angle (IPS) high definition LCD panel, the device and landscape mode. Barcode, RFID and card swipe readers are also available as an add-on module attached directly to the device for multiple purposes. Design for 24/7 operation the Nebula is the most versatile device for commercial applications.

Available in 10", 15.6" and 21.5" widescreen with selectable high-performance CPUs and Full-HD IPS capacitive touchscreens

Choice of Wi-Fi / Ethernet / Cellular Connectivity

Optimize deployments with cloud-based configuration, monitoring and scheduling

Modern design with flexible mounting in portrait, landscape and table-top orientation

Nebula All-in-one Touch System

		GAD101-A	NEB156	NEB215	
Screen size		10"	15.6"	21.5"	
Panel info.	Resolution	1280 x 800	1920 x 1080		
	Brightness	350 cd/m ²	250 cd/m ²		
	Contrast ratio	800:1	1000:1		
	Aspect Ratio	16:10	16:9		
	Active Display Area	134.8 x 216.2mm	344.16 x 193.59 mm	476.06 x 267.786 mm	
	Viewing angle	H:170°/ V:170°	H:178°/ V:178°		
	Touch Tech.	5 point cap touch (6H semi-tempered glass)	10 point cap touch (reflective glass)		
	Hardware & OS	CPU	RK3288 Cortex A17, Quad core 1.8GHz / RK3399 Cortex A72 up to 1.8GHz, Quad-core Cortex-A53 up to 1.4GHz	RK3288 ARM A17, Quad core 1.8 GHz / RK3399 Cortex A72 up to 1.8GHz, Quad-core Cortex-A53 up to 1.4GHz	
RAM		2GB DDR3 (up to 4GB DDR3)			
ROM		8GB (up to 16GB) eMMC Flash			
OS		Android 5.1 (Upgradable to Android 7.1)			
Video/ Image	Video format	H.265, VP8, RV, WMV, AVS, H.263, MPEG4, HTML5, Flash 10	H.265, VP8, RV, WMV, AVS, H.263, MPEG4, Up to 4K x 2K decoding, HTML5, Flash 10		
	Audio format	MP3/ WMA/ AAC etc.			
	Image format	JPEG, BMP, PNG			
Audio	Speaker	1W x 2	2W x 2		
Communication	Bluetooth	EDR 4.0			
	Wi-Fi	802.11 b/g/n	802.11 b/g/n 2.4GHz		
	Ethernet	10/100 LAN			
General information	Color	Black			
	I/O	RJ45 x 1; USB x 1; SD slot x 1; Micro-USB x 1; 3.5mm audio x 1; Recover x 1. expandable 2 USB	RJ45 x 1; USB x 2; SD slot x 1; Micro-USB x 1; 3.5mm audio x 1; Recover x 1; GPIO Support	RJ45 x 1; USB x 4; SD slot x 1; Micro-USB x 1; 3.5mm audio x 1; Recover x 1; RS232 x 2; GPIO Support	
	AV capability	/	Front Facing Camera 2 MP fixed focus (Optional)		
	Included in Box	Tablet, Power Adaptor, Power cable			
	Sensors	G-sensor			
	Consumption	11W	15W	32W	
	Power input	12V 2A	12V 5A		
	Operating Environment	Operating: 32°F to 104°F (0°C to 40°C); Storage: -4°F to 122°F (-20°C to 50°C) Operating: 20%-80%; Storage: 10%-95%			
	Certification	CE, FCC, ROHS			
	Language	Multi language			
	VESA	VESA 75	VESA 100		
	Dimension	Size (W x D x H)	267 x 34 x 165 mm	383.8 x 223.2 x 30.1 mm	534.5 x 326 x 47.6326 mm
Product Weight		700 g	1.4Kg	3.8Kg	
Giff Box Size		385 x 65 x 222 mm	444 x 348 x 112 mm	582 x 422 x 114 mm	
Master Carton size		470 x 400 x 355 mm	462x 375 x 356 mm	601 x 446 x 360 mm	
Master Carton Weight		13.7Kg	7.5Kg	16.7Kg	
Units per Master Carton		10pcs	3pcs	3pcs	

*see dimensional drawings for details

Options information

Option	Type	Remarks		
3G/4G module	Mini-PCI add-on	WCDMA / HSDPA 2100 / 1900 / 850 (900) MHz GSM / GPRS / EDGE 850 / 900 / 1800 / 1900 MHz		
Front Camera	PCB add-on	2 Megapixel with Fixed Focus / 5Megapixel with Auto Focus		
Barcode module	Micro-USB add-on module	1D barcode/ 2D barcode		
RFID / NFC module	Micro-USB add-on module	ISO 14443 T=CL, T=CL, 1K/4K, ISO 18092		
Magnetic card swipe	Micro-USB add-on module	ISO 7811, ISO 7810, AAMVA, CA DMV, ANSI		
STAROS	• Kiosk lockdown	• Hide control buttons	• Set timer to turn device on and off	• App Lockdown

Glorystar reserves the right to change or update, without notice.

JARVIS

Android POS Tablet for Retail



10 point
capacitive touch



STAROS
- kiosk lockdown app included

Starcontrol

STAR CONTROL
- remotely manager tablets



Commercial grade

Product overview

Glory Star Instore POS Tablets are designed for brands and retail shops to display interactive contents. STAROS the kiosk lockdown app is included in the tablet where it securely locks down the tablet from third party access, and with STARCONTROL, you can remotely manage the status of the tablets.

Available in 10", 14", 18.5", 23.8", 27", 31.5" widescreen high-performance CPUs and HD IPS capacitive touchscreens

Choice of Wi-Fi / Ethernet

Optimize deployments with cloud-based configuration, monitoring and scheduling

Modern design with flexible mounting in portrait, landscape and table-top orientation

Instore POS tablet

Specification		JAR101	JAR141	JAR185	JAR238	JAR271	JAR321
Screen size		10"	14 "	18.5"	23.8"	27"	32"
Panel info.	Resolution	1280 x 800	1920 x 1080	1366 x 768	1920 x 1080		
	Brightness	350 cd/m2	250 cd/m2	200 cd/m2	250 cd/m2	250 cd/m2	280 cd/m2
	Contrast	800:1	700:1	1000:1	1000:1	1000:1	1200:1
	Aspect Ratio	16:10	16:9				
	Active Display Area	134.8x216.2	165.4x294.3	228.0x407.7	294.4x522	337.1x598.6	393.8x699.4
	Viewing angle	H170°/ V170°	H178°/ V178°	H178°/ V178°	H178° / V178°	H170° / V 170°	H178° / V178°
	Touch Tech.	5point cap touch (6H semi-tempered glass)	10-point cap touch (6H semi-tempered glass)				
	Hardware & OS	CPU	RK3128 CortexA7, Quad core 1.2 GHz	RK3288 Cortex A17, Quad core 1.8 GHz			
RAM		1GB DDR3	2GB DDR3				
ROM		8GB eMMC Flash					
OS		Android 7.1					
Video/ Image	Video format	H.265, VP8, RV, WMV, AVS, H.263, MPEG4, HTML5, Flash 10					
	Audio format	MP3/ WMA/ AAC etc.					
	Image format	JPEG, BMP, PNG					
Audio	Speaker	2 x 1W	2 x 3W	2 x 3W	2 x1.5W	2 x 5W	2 x 5W
Communication	Bluetooth	EDR 4.0					
	Wi-Fi	802.11 b/g/n	802.11 b/g/n 2.4GHz and 5GHz				
	Ethernet	10/100 LAN					
General information	Color	Black					
	I/O	RJ45 x 1;USB x 3; SD slot x 1; Micro-USB x 1; 3.5mm audio x 1; Recover x 1					
	POE	Yes	N/A				
	Included in Box	Instore POS series tablet, Power Adaptor, Power cable					
	Sensors	G-sensor					
	Power input	12V 2A	12V 5A				
	Operating Environment	Operating: 32°F to 104°F (0°C to 40°C); Storage: -4°F to 122°F (-20°C to 50°C) Operating: 20%-80%; Storage: 10%-95%					
	Certification	CE, FCC, ROHS					
	Language	Multi language					
	VESA	VESA 75	VESA 75/100				
Dimension	Dimension (L x W x H)	250 × 28 ×172 mm	355 × 32.6 ×228 mm	462 × 37.5 ×282.5 mm	595.5 × 43.6 ×363.1 mm	662.73 × 60.53 ×400 mm	763.77 × 72.52 ×457.21 mm
	Weight	660g	1120g	2563g	4800g	5300g	8000g
	Box size/each PCs (L x W x H)	385 x 65 x222 mm	435 x 96 x320 mm	542 x 102 x375 mm	655x115 x455mm	725x115 x490mm	842x115 x575mm
	Master Box size (L x W x H)	470x400 x355 mm	443x396 x374 mm	550x318 x414 mm	670x250 x480mm	740x250 x515mm	864x258 x611cm
	Master Box weight	13.7Kg	8.76Kg	11.82 Kg	14.2Kg	15.6Kg	21.8Kg
	Pieces/Carton	10 PCS	4 PCS	3 PCS	2PCS	2PCS	2PCS

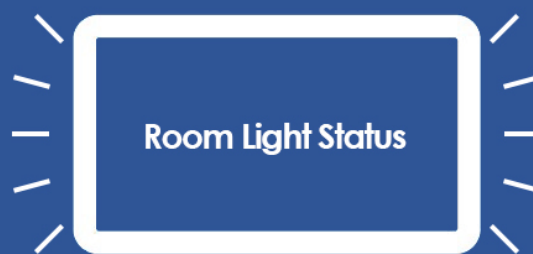
STAROS Features

STAROS	<ul style="list-style-type: none">• Kiosk lockdown• Set timer to turn device on and off	<ul style="list-style-type: none">• App Lockdown• Hide control buttons
STAR CONTROL	<ul style="list-style-type: none">• Manage device remotely• Upload video to device	<ul style="list-style-type: none">• Control power on/off• Manage apps remotely

To find out more about our extensive range of Glorystar solutions, go to www.glorystargroup.com , or call the office nearest you. For more information, please contact us at sales@glorystargroup.com. Glorystar reserves the right to change or update, without notice, any information contained herein; to change, without notice, the design, construction, materials, processing or specifications of any products; and to discontinue or limit production or distribution of any products. Glorystar, the Glorystar logo, STAR CONTROL and STAROS are either trademarks or registered trademarks of Glorystar Group Limited. All other trademarks are the property of their respective owners.



ROOM DISPLAY TABLET



Product overview

Glory Star room display tablet is designed in a 1.7cm sleek housing with embedded LED lights in green, red and yellow. The tablet is designed for room managements, resource managements and building automations. It is based on a license free Android OS platform, Glory Star provides open API and technical support for developers. It includes a lockdown software that allows the device to turn on and go automatically to the meeting room/scheduling applications.

Available in 10" widescreen with high-performance CPUs and Full-HD IPS capacitive touchscreens

Choice of Wi-Fi / Ethernet

Optimize deployments with cloud-based configuration, monitoring and scheduling

Modern design with flexible mounting in portrait, landscape and table-top orientation

Room display tablet

Specification		JAR 101
Screen size		10.1"
Panel info.	Resolution	1280 x 800
	Brightness	300 cd/m ²
	Contrast ratio	800:1
	Aspect Ratio	16:10
	Active Display Area	134.8x216.2mm
	Viewing angle	H:170°/ V:170°
	Touch Tech.	5 point cap touch (reflective glass)
Hardware & OS	CPU	RK3128 ARM A17, Quad core 1.8 GHz
	RAM	1GB DDR3
	ROM	8GB eMMC Flash
	OS	Android 5.1
Video/ Image	Video format	H.265, VP8, RV, WMV, AVS, H.263, MPEG4, Up to 4K x 2K decoding, HTML5, Flash 10
	Audio format	MP3/ WMA/ AAC etc.
	Image format	Jpeg, bmp, png
Audio	Speaker	1W x 2
Communication	Bluetooth	EDR 4.0
	Wi-Fi	802.11 b/g/n
	Ethernet	10/100 LAN with POE
General information	Color	Black
	I/O	RJ45 x 1; USB x 1; SD slot x 1; Micro-USB x 1; 3.5mm audio x 1; Recover x 1
	AV capability	Front Facing Camera 2/5 MP fixed focus (Optional)
	Included in Box	Meeting room tablet, Power Adaptor, Power cable
	Sensors	G-sensor
	Consumption	<11W
	Power input	12V 2A
	Operating Environment	Operating: 32°F to 104°F (0°C to 40°C); Storage: -4°F to 122°F (-20°C to 50°C); Operating: 20%-80%; Storage: 10%-95%
	Certification	CE, FCC, ROHS
	Language	Multi language
	VESA	VESA 75
Dimension	Dimension (L x W x H)	250 x 28 x 172 mm
	Weight	660g
	Box size/each PCs (L x W x H)	385 x 65 x 222 mm
	Master Box size (L x W x H)	470x400x355 mm
	Master Box weight	13.7Kg
	Pieces/Carton	10 PCS

*see dimensional drawings for details

STAROS Features

STAROS	• Kiosk lockdown	• Hide control buttons
	• Set timer to turn device on and off	• App Lockdown
STAR CONTROL	• Manage device remotely	• Control power on/off
	• Upload video to device	• Manage apps remotely

Options information

Option	Type	Remarks
Front Camera	PCB add-on	2 Megapixel with Fixed Focus / 5Megapixel with Auto Focus
Barcode module	USB/GPIO module	1D barcode/ 2D barcode
RFID module	USB/GPIO module	ISO 14443 T=CL, T=CL, 1K/4K, ISO 18092
Magnetic card swipe	USB/GPIO module	ISO 7811, ISO 7810, AAMVA, CA DMV, ANSI

To find out more about our extensive range of Glorystar solutions, go to www.smarthomegcc.com, or call the office nearest you.

For more information, please contact us at info@smarthomegcc.com

Glorystar reserves the right to change or update, without notice, any information contained herein; to changewithoutnotice, the design, construction, materials, processing or specifications of any products; and to discontinue or limit production or distribution of any products. Glorystar, the Glorystar logo, STAR CONTROL and STAROS are either trademarks or registered trademarks of Glorystar Group Limited. All other trademarks are the property of their respective owners.

Ultron

AiO Windows Tablet



10.1"

15.6"

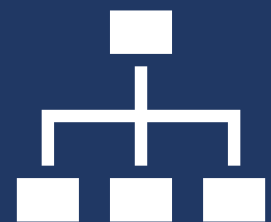
21.5"



Commercial Grade



All-in-One



Highly-expandible

Product overview

Ultron windows tablet Series is designed to be placed individually as a All-in-One kiosk. There are VESA mounting holes at the back of the tablet for easy installation.

Available in 10.1", 15.6", 21.5" widescreen

The most common operating system

Easy deployments with various VESA mounting

10.1" / 15.6" / 21.5"

		J1900			3865U (Kaby Lake)			i3-7100U (Kaby Lake)			i5-7200U (Kaby Lake)		
Screen size		10.1"	15.6"	21.5"	10.1"	15.6"	21.5"	10.1"	15.6"	21.5"	10.1"	15.6"	21.5"
Panel info.	Resolution	1280 x 800	1920 x 1080	1920 x 1080	1280 x 800	1920 x 1080	1920 x 1080	1280 x 800	1920 x 1080	1920 x 1080	1280 x 800	1920 x 1080	1920 x 1080
	Brightness	350 cd/m2	220 cd/m2	220 cd/m2	350 cd/m2	220 cd/m2	220 cd/m2	350 cd/m2	220 cd/m2	220 cd/m2	350 cd/m2	220 cd/m2	220 cd/m2
	Contrast ratio	800:1	800:1	1000:1	800:1	800:1	1000:1	800:1	800:1	1000:1	800:1	800:1	1000:1
	Aspect Ratio	16:10	16:9	16:9	16:10	16:9	16:9	16:10	16:9	16:9	16:10	16:9	16:9
	Active Display Area	134.8 x 216.2 mm	344.16 x 193.59mm	476.06 x 267.786mm	134.8 x 216.2 mm	344.16 x 193.59mm	476.06 x 267.786mm	134.8 x 216.2 mm	344.16 x 193.59mm	476.06 x 267.786mm	134.8 x 216.2 mm	344.16 x 193.59mm	476.06 x 267.786mm
	Viewing angle	H:170°/ V:170°	H: 178°/ V:178°	H:170°/ V:170°	H:170°/ V:170°	H: 178°/ V:178°	H:170°/ V:170°	H:170°/ V:170°	H: 178°/ V:178°	H:170°/ V:170°	H:170°/ V:170°	H: 178°/ V:178°	H:170°/ V:170°
	Touch Tech.	10 point cap touch (6H semi-tempered glass)											
CPU & System	CPU	Intel Celeron J1900 (Quad Core)			3865U (2 cores)			Intel Core i3 7100U (2 cores)			Intel Core i5 7200U		
	Base Frequency	2.0 GHz			1.80 GHz			2.40GHz			2.5 GHz		
	CPU Turbo Boost	2.42 GHz			/			/			3.1 GHz		
	CPU Cache	2MB			2 MB SmartCache			3 MB SmartCache			3MB		
	BIOS	AMI 8MB UEFI BIOS											
RAM	RAM	4GB DDR3L @1333 MHz (upgradable)			Dual Channel 2 x DDR4 2133 MHz			Dual Channel 2 x DDR4 2133 MHz			4GB DDR4 2133 MHz (upgradable)		
ROM	Storage	64GB SSD (upgradable)			128GB			128GB			128GB SSD (upgradable)		
Software	OS	Pre-installed Windows 10 IoT core (License is optional)			Win 10 64bit, Linux 32 / 64 bit			Win 10 64bit, Linux 32 / 64 bit			Pre-installed Windows 10 IoT core (License is optional)		
GPU	GPU chipset	Intel HD Graphic (Bay Trail, 688 - 854 MHz)			Intel HD Graphis 610			Intel HD Graphics 620			Intel HD Graphic620		
	VGA	Yes			No			No			No		
	Display Port	No			Yes			Yes			Yes		
	HDMI	Yes											
	# of display supported	2			HDMI+DP+eDP/LVDS (3 Display)			HDMI+DP+eDP/LVDS (3 Display)			3		
Audio	Codec	Realtek HD ALC662											
	I/O	Line-out x 1, Mic-in x 1			Line-out x 1, Mic-in x 1			Line-out x 1, Mic-in x 1			Line-out & Mic-in Combo x 1		
	Speaker	5W x 2											
Ethernet	Controller	Realtek RTL8111F Gigabit LAN			Intel i211 - 10/100/1000Mbps			Intel i211 - 10/100/1000Mbps			Intel i211 - 10/100/1000Mbps		
	Connector	2 x RJ45											
	Wake on LAN	Yes											
Storage	Slot	1 x mSATA/ SATA 2.0; 1 x SATA2.0			SATA 3.0 x 2 (Celeron for 1 only)			SATA 3.0 x 2 (Celeron for 1 only)			1 x M.2; 2 x SATA3.0		
Housing	Material & color	Metal housing with Matte black paint											
I/O	USB 2.0	2			0			0			0		
	USB 3.0	1			4			4			4		
	Audio	Line-out x 1; Mic-in x 1			Line-out x 1; Mic-in x 1			Line-out x 1; Mic-in x 1			Line-out & Mic-in Combo x 1		
	LAN	2			2			2			2		
	HDMI	1 (HDMI1.4)											
	Display port	0			1			1			1		
	VGA	1			0			0			0		
Upgradable I/O	USB2.0	4			4			4			4		
	RS232	6 (COM2 able to change to RS485) (Only COM2 & 4 with power supply)			5 (Only COM2 & 4 with power supply)			5 (Only COM2 & 4 with power supply)			4 (with power supply)		
	RS485	1 (switch from COM2)			1			1			2		
	PS/2	1 (Keyboard or Mouse)			1 (Keyboard or Mouse)			1 (Keyboard or Mouse)			No		
	GPIO	8			8			8			8		

	LPT	1	1	1	0
AV capability	Camera	Front Facing Camera 2/5 MP fixed focus (Optional)			
Hardware monitor	Sensor	CPU temperature sensor; Voltage sensor; Watchdog; Plug and Start			
	Included in Box	Ultron open frame tablet, Power Adaptor, Power cable			
	Consumption	TBC			
	Power input	12V 5A	1 x 12V DC - IN/4 PIN Power	1 x 12V DC - IN/4 PIN Power	12V 5A
	Operating Environment	Operating: 32°F to 104°F (0°C to 40°C); Storage: -4°F to 122°F (-20°C to 50°C) Operating: 20%-80%; Storage: 10%-95%	Operating: -40°C ~ 60°C; Storage: -40°C ~ 80°C	Operating: -40°C ~ 60°C; Storage: -40°C ~ 80°C	Operating: 32°F to 104°F (0°C to 40°C); Storage: -4°F to 122°F (-20°C to 50°C) Operating: 20%-80%; Storage: 10%-95%
	Certification	CE, FCC, ROHS			
	Language	Multi language			
	VESA	VESA 75 for 10 inch, VESA 100 for 15.6 and 21.5 inch			

Options information

Option	Type	Remarks
3G/4G module	Mini-PCI-e add-on	WCDMA / HSDPA 2100 / 1900 / 850 (900) MHz GSM / GPRS / EDGE 850 / 900 / 1800 / 1900 MHz
Windows 10 IoT core license	/	/
RAM	Extra RAM	4/ 8GB
SSD	Mini-PCI-e add-on	64/ 128 GB
Front Camera	Extra PCB	2 Megapixel with Fixed Focus / 5Megapixel with Auto Focus
Barcode module	USB accessories	1D barcode/ 2D barcode
RFID / NFC module	USB accessories	ISO 14443 T=CL, T=CL, 1K/4K, ISO 18092
Printer	RS232/USB accessories	Receipt thermal printer

To find out more about our extensive range of Glorystar solutions, go to www.glorystargroup.com, or call the office nearest you. For more information, please contact us at sales@glorystargroup.com. Glorystar reserves the right to change or update, without notice, any information contained herein; to change, without notice, the design, construction, materials, processing or specifications of any products; and to discontinue or limit production or distribution of any products. Glorystar, the Glorystar logo, STAR CONTROL and STAROS are either trademarks or registered trademarks of Glorystar Group Limited. All other trademarks are the property of their respective owners.

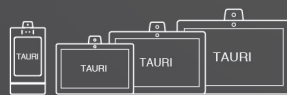


TAURI 7



1. Compact Solution

7inch screen size diagonal.



2. Software Flexibility

Software compatible with full series of TAURI products including 7inch, 10inch,15.6inch and 21.5inch.



3. IP65 Front Glass WaterProof

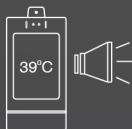


4. Anti-glare glass to eliminate reflections



5. Dual Camera

For higher security and accuracy to recognize a human face.



6. High temperature alarm

An alarm with sound to alert users that runs a high temperature.



7. Customizable Screen Saver Videos - Free Advertising

Options to play customized videos when no scans are performed on TAURI. This allows companies to promote their brand/products with a personalized message.

TAURI OTA



8. Constant Feature Updates

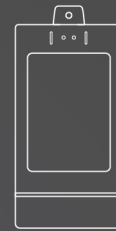
TAURI is designed, developed and manufactured by GloryStar. We provide constant software features upgrade for TAURI.

9. Access Control

It can be synced with automatic doors through relays to restrict entry access to people who run at a high temperature.

10. German Made Sensor

Infrared Temperature sensor made in Germany.



11. Face Detection

Facial detection is a technology that differentiates a human face from other objects.

i. It can provide a reminder alert if a person is not protected with a facial mask - this is an optional feature in settings.

ii. Taking a snapshot of someone who runs a high temperature and send an email notification - this feature is optional in settings

12. Optional Face Recognition

i. Recognize employees - employees can voluntarily take a photo of themselves to be locally stored in TAURI for employee/guest recognition for increased security.

ii. If an employee runs a high temperature, time and location is marked and an email alert is sent to facilitate tracking and decrease the spread of infection.

13. RFID Card Access (coming soon)

Connect with RFID card to control door opening.



TAURI7 Specification

Model		TAURI7
Display	Panel Size	7"
	Brightness	400nits
	Resolution	800 x 1280
Hardware	Processor	Quad Core A35
	RAM	2GB
	Storage	8GB
Operating System	OS	Android 8.1
Software	TAURI features	Define temperature range for alert Adjust volume of alert sound OTA Feature Update Heat Map Generation Multi Language support Face Detection Optional Face Recognition
Connectivity	Wifi	2GHz + 5GHz
	Bluetooth	EDR 4.0
	RFID	EM4100, Mifare s50 S70, Desfire, FM1208
	Ethernet	RJ45 10/100PoE
	Digital I/O	Relay x 2, RS485 x 1, RS232 x 1
	USB	Micro USB x 1
Multimedia	Microphone	Echo cancelling mic
	Speaker	Waterproof speaker; 2W x 1
	Camera	Dual Camera 1 RGB, 1 Infrared
	Sensor	Proximity sensor; Ambient sensor;
Sensor	Lighting	White
	Monitor	Watchdog for device status
Mounting	Mounts	Wall Mount, Table Stand (additional cost) or Floor Stand (additional cost)
Power	Consumption	12W
	Power supply	Either 12V DC or POE
Infrared Temperature Sensor	Power input	3.3 – 3.6V, 50mA, USB connect
	Temperature check distance	0.5m – 1m
	Temperature check range	-45°C - 30°C
	Temperature check error	±0.3°C
Dimension	Size (mm)	230 x 112 x 40
	Weight (kg)	1.5KG
	Gift Box Dimension (mm)	405 x 208 x 127
	Gift Box Weight	2KG(without bracket)
	PCs per Master Carton	6 pcs
	Master carton weight (kg)	9KG(without bracket)
	Master carton dimension (mm)	440 x 420 x 405

Vega

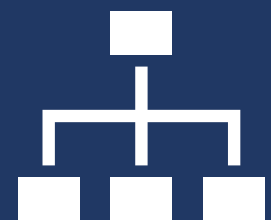
Automation tablet



Commercial Grade



All-in-One



Highly-expandible

VEGA is an android based automation console. It is designed to be embedded into wall for seamless touch experience. The modular circuit design allows VEGA to be compatible with mainstream automation protocols like KNX, Zigbee, Z-wave, WIFI etc, it solves the compatibility concerns of Smart Home, Smart Intercom and Smart Doorbell. It allows a one touch control platform for buildings and partments. VEGA offers flexibility and diverse customization to the IOT industry.

Available in 10.1", 7"

User-friendly operating system to use

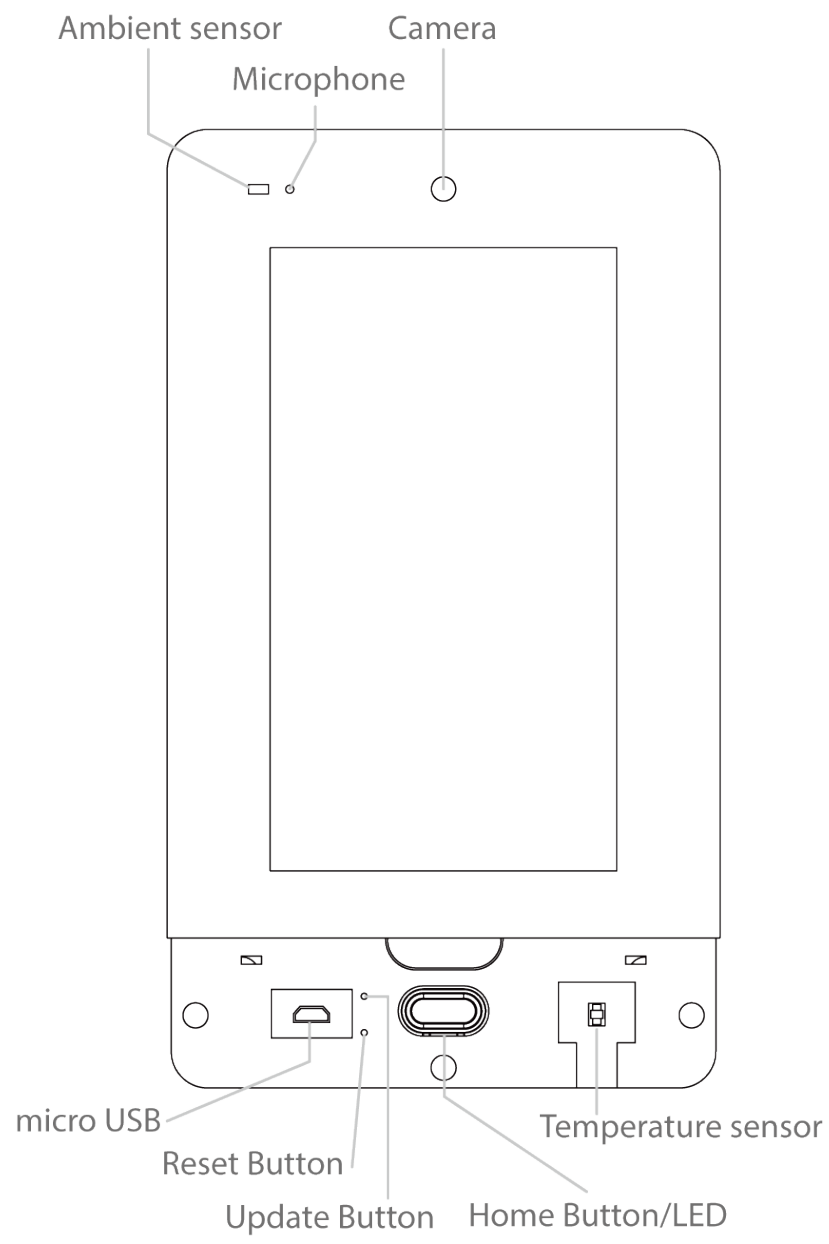
Customized deployments with your own configuration

Vega specification

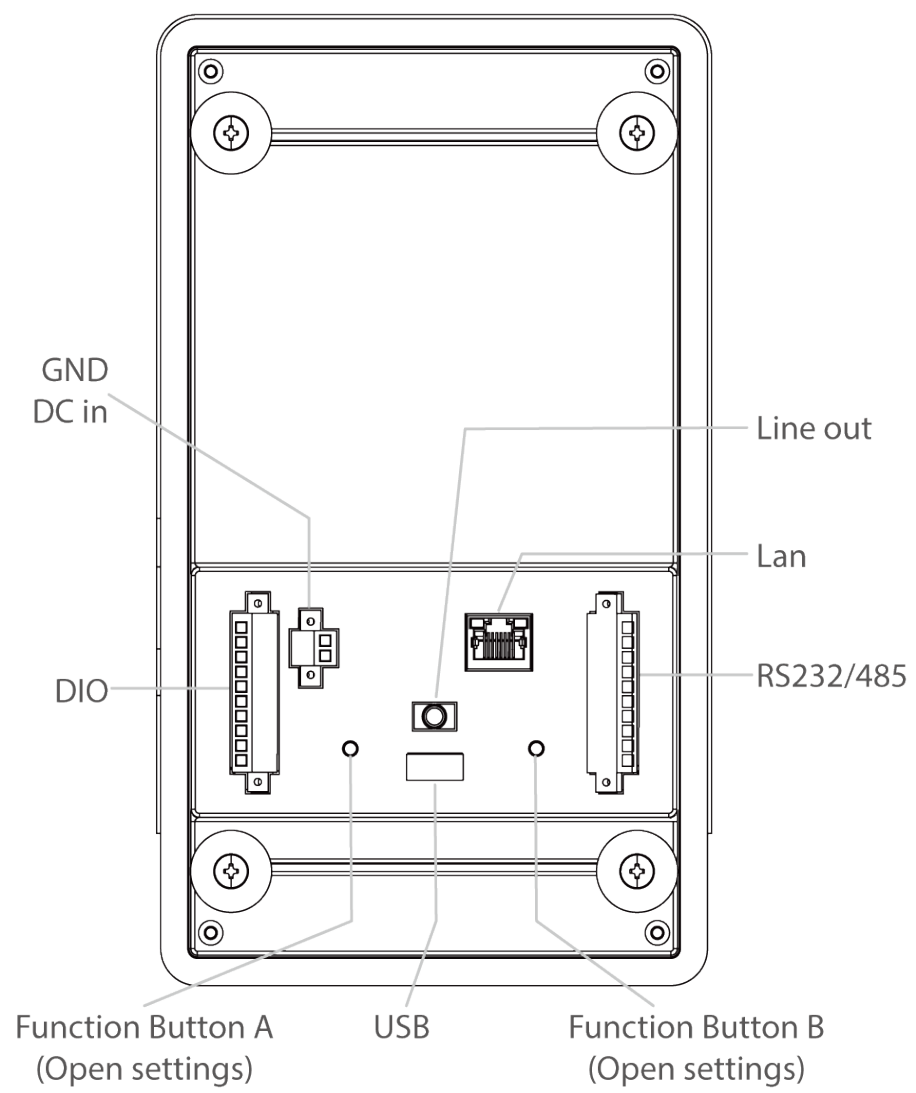
Model		VEGA073	VEGA101
Display	Panel Size	7"	10"
	Brightness	250 nits	250 nits
	Resolution	1024 x 600	1280 x 800
Hardware	Processor	RK3128	
	RAM	1GB	
	Storage	8GB eMMC (Upgradable to 128GB)	
Operating System	OS	Android 7.1	
Connectivity	Wifi	2.4GHZ and 5Ghz	
	Bluetooth	EDR 4.0	
	Optional	Zigbee/Z-wave	
		UART232/KNX	
		UART232/RS485	
	Ethernet	RJ45 10/100 PoE	
	Digital I/O	GPIO – input x 2, output x 2	
	USB	USB x 1 and micro USB x 1	
Multimedia	Microphone	Noise canceling mic	
	Speaker	2W x 1	2W x 2
	Camera	2 mega pixel and light balance (optional)	
Sensor	Sensor	Temperature and Ambient sensor	
	Lighting	3 color lighting for different status Red/Green/Yellow	
	Monitor	Watchdog for device status	
Mounting	Mounts	4 Magnetic mounts	
Power	Consumption	5.5W	7W
	Power supply	Either 12V DC or POE	
Dimension (mm)		237.7 x 136.6 x 38.6	186.5 x 296.8 x 38.6
Weight (kg)		0.75	1.06
Gift Box Dimension (mm)		277 x 177 x 79	351 x 223 x 81
Gift Box Weight		1.1	1.3
PCs per Master Carton		16	16
Master carton weight (kg)		16.5kg	21kg
Master carton dimension (mm)		575 x 370 x 340	720 x 460 x 355

*see dimensional drawings for details

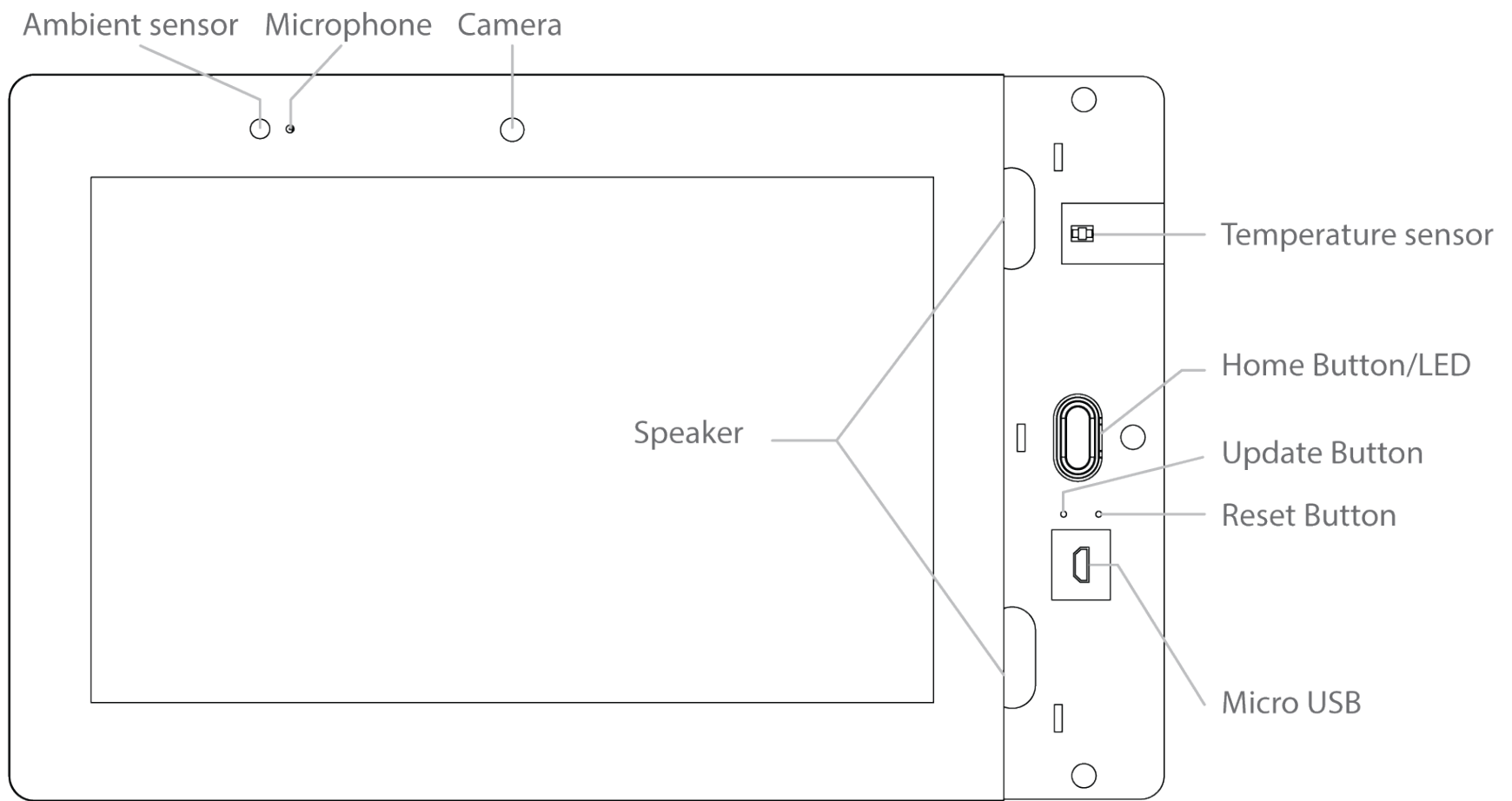
To find out more about our extensive range of Glorystar solutions, go to www.glorystargroup.com, or call the office nearest you. For more information, please contact us at sales@glorystargroup.com. Glorystar reserves the right to change or update, without notice, any information contained herein; to change, without notice, the design, construction, materials, processing or specifications of any products; and to discontinue or limit production or distribution of any products. Glorystar, the Glorystar logo, STAR CONTROL and STAROS are either trademarks or registered trademarks of Glorystar Group Limited. All other trademarks are the property of their respective owners.



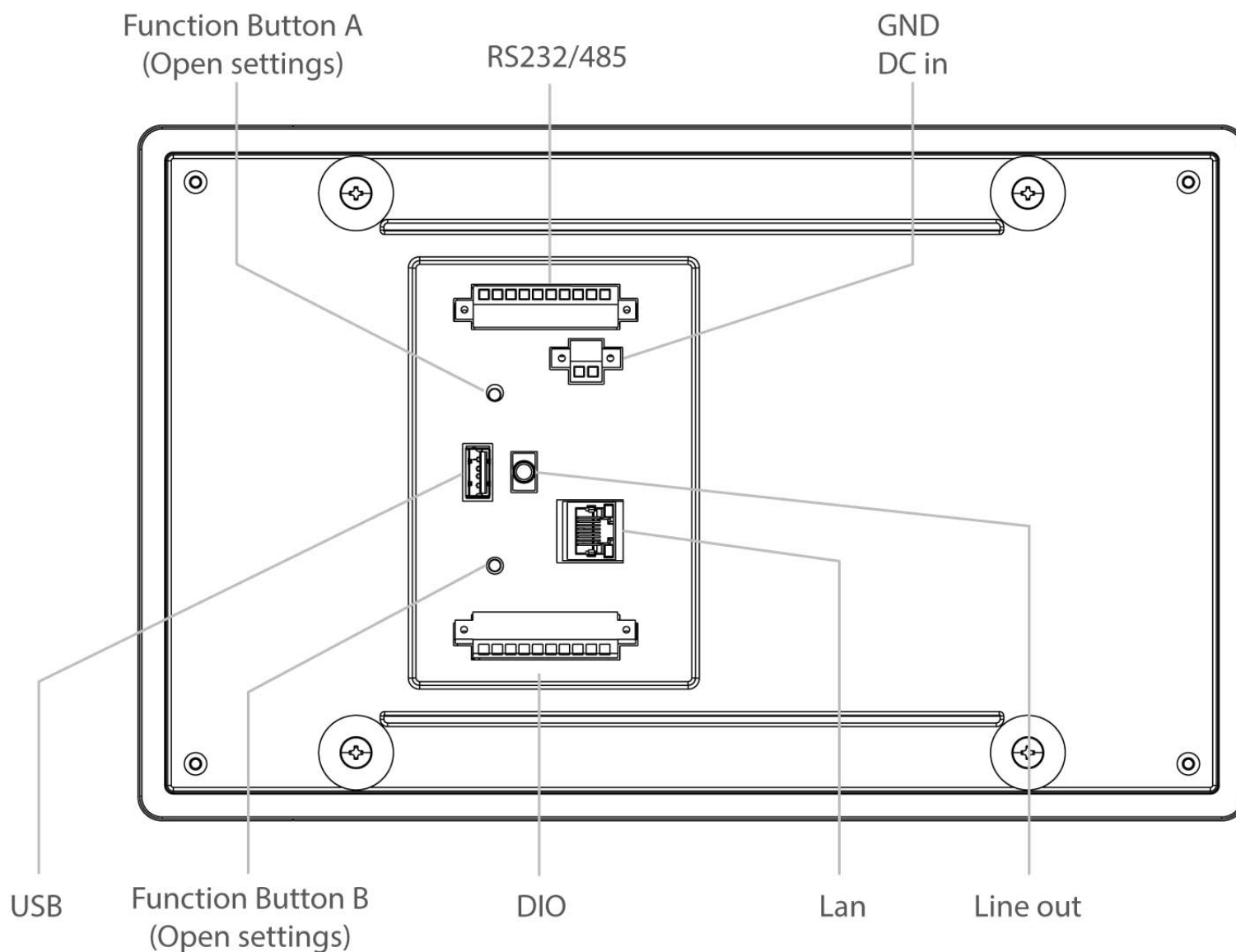
Front



Back



Front



Back

Vega X

Outdoor Access Control



Wall mount

Flush mount



Anti-glare tempered glass



Flush and Surface mount



Customizable

Product overview

Vega X is a IP65 waterproof outdoor access control device that supports SIP with IP calling. It runs on an android operating system to allow third parties or software developers to develop their software and services on top of VegaX and VegaOS. We are able to provide private label service or to sell and support VegaX. It is designed to be used in gate entrances, commercial and residential building entrances.

The Android platform and GloryStar's open API has allowed a low barrier to entry, allowing a high ROI to software developers and system integrators.

- Echo-cancelling
- POE
- Reduce installation cost
- IP65 Waterproof & anti-glare tempered glass
- RFID
- Proximity sensor
- Ambient sensor

Vega X specification

Model		VOD073
Display	Panel Size	7"
	Brightness	400nits
	Resolution	800 x 1280
Hardware	Processor	Quad Core A35
	RAM	2GB
	Storage	8GB
Operating System	OS	Android 8.1
Connectivity	Wifi	2GHz + 5GHz
	Bluetooth	EDR 4.0
	RFID	EM4100, Mifare s50 S70, Desfire, FM1208
	Ethernet	RJ45 10/100PoE
	Digital I/O	Relay x 2, RS485 x 1, RS232 x 1
	USB	Micro USB x 1
Multimedia	Microphone	Echo cancelling mic
	Speaker	Waterproof speaker, 2W x 1
	Camera	2M camera with LED
Sensor	Sensor	Proximity sensor; Ambient sensor;
	Lighting	White
	Monitor	Watchdog for device status
Mounting	Mounts	Wall mount of flush mounting
Power	Consumption	12W
	Power supply	Either 12V DC or POE
Dimension (mm)		267 x 131 x 41
Weight (kg)		1.6KG
Gift Box Dimension (mm)		405 x 208 x 127
Gift Box Weight		2KG(without bracket)
PCs per Master Carton		6 pcs
Master carton weight (kg)		9KG(without bracket)
Master carton dimension (mm)		440 x 420 x 405

*see dimensional drawings for details

To find out more about our extensive range of Glorystar solutions, go to www.glorystargroup.com, or call the office nearest you. For more information, please contact us at sales@glorystargroup.com. Glorystar reserves the right to change or update, without notice, any information contained herein; to change, without notice, the design, construction, materials, processing or specifications of any products; and to discontinue or limit production or distribution of any products. Glorystar, the Glorystar logo, STAR CONTROL and STAROS are either trademarks or registered trademarks of Glorystar Group Limited. All other trademarks are the property of their respective owners.

NEBULA

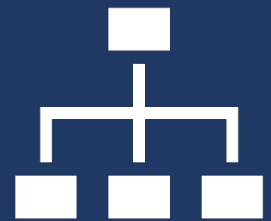
ANDROID BOX



Commercial Grade



All-in-One



Highly-expandable

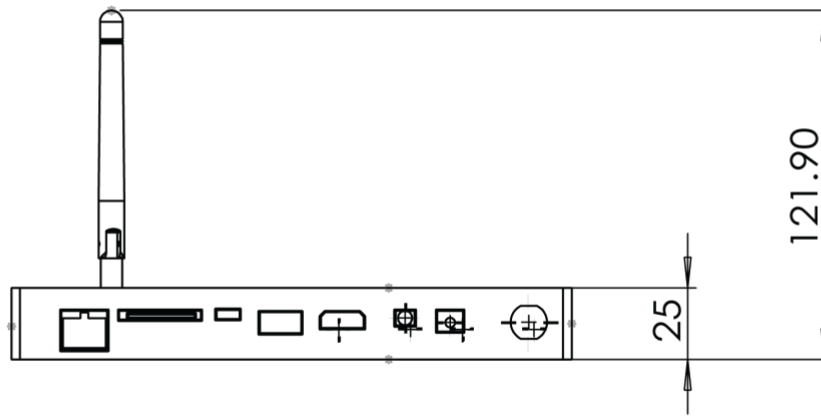
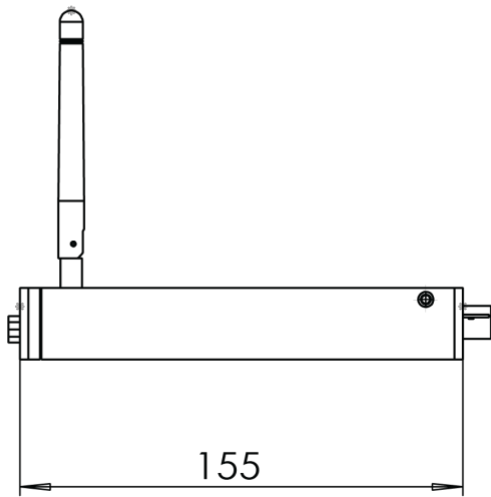
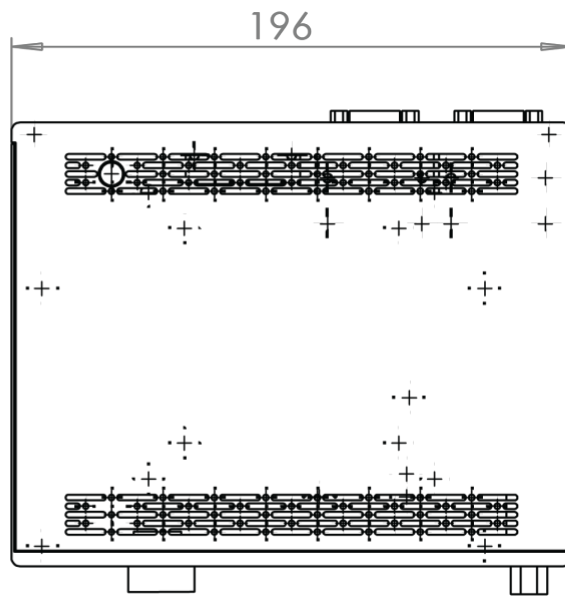
Product overview

The Nebula Box is an Android engine that is capable of running audio and video contents, interactive HTML websites and Android based apps. Users can easily scale Nebula Box to many sizes and form factors. It is equipped with numerous RS232 supporting peripheral for scanning, payment, printing and biometric input.

NEBULA Android BOX specification

*see dimensional drawings for details

Model		GSA005
Connectivity	I/O	RJ45, SD card Micro ,USB (USB OTG), USB, HDMI, Audio out (Φ3.5mm x1), Recover, DCIN RS232 x 2, Antenna WIFI
General information	Color	Black
	Case material	Metal
Processor	CPU	RK 3288, 4 core, 1.8GHz
Hardware	ROM	EMMC 8GB
	RAM	DDR3 2GB
	Wifi	802.11b/g/n
	Bluetooth	BT4.0
OS	Operation system	Android 7.1
Video / image / audio	Audio	AAC, AMR, FLAC, M4A, M4R, MP2, MP3, OGG, WAV, WMA,etc.
	Video	MOV,FLV, MP4, MKV, MPG, MPEG, etc.
	HTML	Available for HTML4
	Image	JPG, BMP, PNG, GIF, etc.
Power adaptor	Power input	DC 12V 2A
	Power input	AC 100-240V, 50/60Hz
	Included in Box	Power Adaptor, Power cable
	Consumption	5W
Dimension	Size (W x D x H)	196 x 155 x 25mm
	Product Weight	1.3kg
	Gift Box Size	336 x 227 x 84mm
	Master Carton size	478 x 351 x 285mm
	Master Carton Weight	8.7kg
	Units per Master Carton	6



To find out more about our extensive range of Glorystar solutions, go to www.smarthomegcc.com , or call the office nearest you. For more information, please contact us at info@smarthomegcc.com . Glorystar reserves the right to change or update, without notice, any information contained herein; to change, without notice, the design, construction, materials, processing or specifications of any products; and to discontinue or limit production or distribution of any products. Glorystar, the Glorystar logo, STAR CONTROL and STAROS are either trademarks or registered trademarks of Glorystar Group Limited. All other trademarks are the property of their respective owners.



Ultron Windows Box Basic

Ultron Windows Box



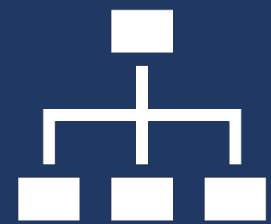
Ultron Windows Box Pro



Commercial Grade



All-in-One



Highly-expandible

Product overview

ULTRON Box Basic and Pro is an aluminum cased, small form factor windows mini PC designed for commercial applications. It is lightweight, compact, portable and easy to set up, with the fanless embedded system, it could be used in retail, automation and security.

ULTRON BASIC

The computer has 1 HDMI and 1 VGA, supporting dual independent playback. 5 × USB 2.0, 1× USB 3.0 with Celeron J1900.

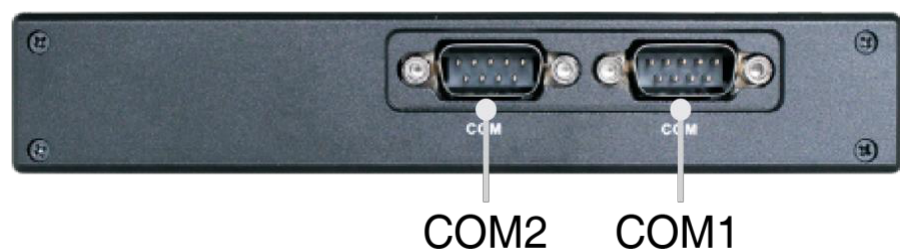
ULTRON PRO

The computer has 1x DP, 1 X HDMI, 4 USB 2.0, 2 X USB3.0, 1 x Type C with a powerful Kabylake, Intel i5 processing power.

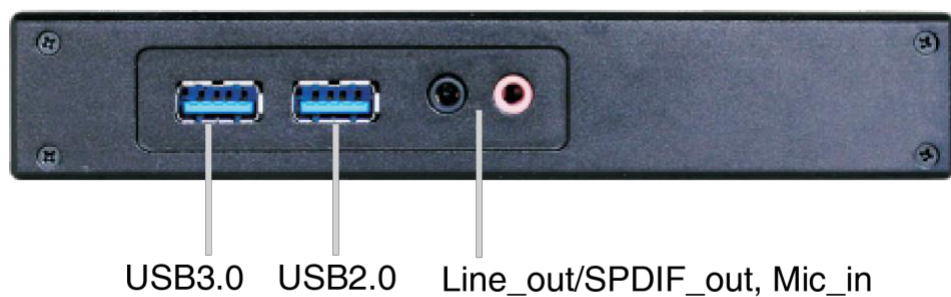
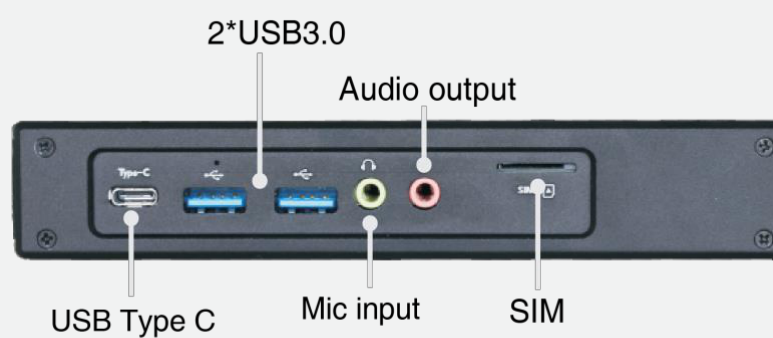
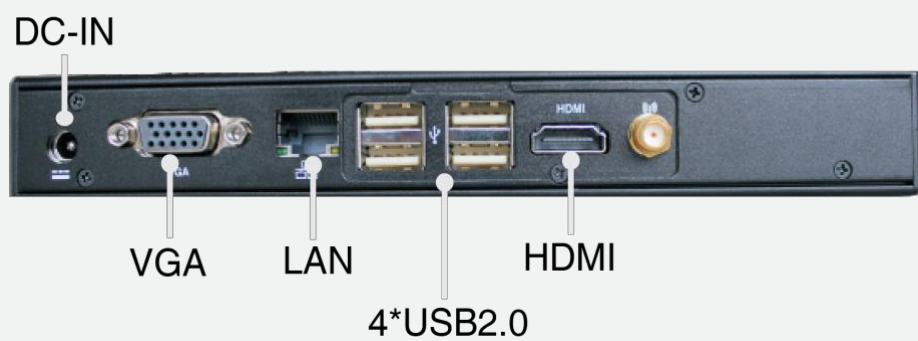
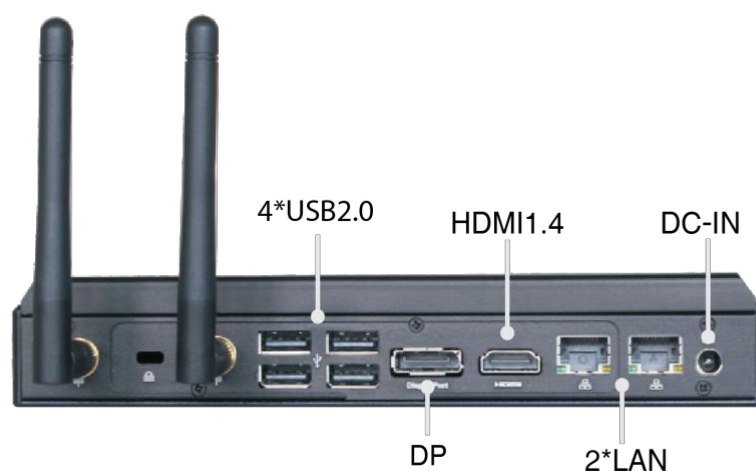
Ultron Windows Box Overview

*see dimensional drawings for details

Ultron Windows Box Basic



Ultron Windows Box Pro



Ultron Windows Box specification

*see dimensional drawings for details

Model		Ultron Windows Box (Basic)	Ultron Windows Box (Pro)
General information	CPU	Celeron J1900(2.00 GHz, Burst Frequency 2.42GHz, quad-Core, TDP 10W)	Supporting Intel 7th Gen. Kabylake-U Processor Intel i5
	System Memory	1 x SO-DIMM slot supports DDR3L up to 8GB RAM	2 x SO-DIMM slot (optional) supports DDR4 up to 32GB RAM
	Ethernet	3 x LAN, RTL8111F, 10Mbps/100Mbps/1000Mbps	2 x LAN (Intel i211)
	Storage	1x SATA (7+15pin), 1x mSATA	M2_S1 (for 2242, SSD, 3G/4G), M2_S2 (for 2242/2280, SSD)
	Expansion	1x SIM slot, 1x mini-PCIe (for WIFI or 3G/4G network)	M2_E1 (for 2230, WIFI and Bluetooth)
	Color	Black	Black
	Display Interface	1x VGA; 1x HDMI	1x DP; 1x HDMI
	COM	2 x COM(RS232)	1x COM
	USB	5x USB2.0, 1x USB3.0	4x USB2.0, 2 x USB 3.0, 1x Type-C (USB3.0, only for voltage output not DP)
	Enclosure Material	Aluminum Alloy	Aluminum Alloy
Audio & Power adaptor	Audio	ALC662 chip, 1x Line_out/ SPDIF_out, 1x Mic in	ALC662 chip, Mic in, Line out
	Wake on LAN	Yes	Yes
	Cooling system	Fanless	Fanless
	Power Supply	1x DC_IN 12/19V	1x DC_IN 19V
	Operating Temperature	-20°C ~ 50°C	-40°C ~ 60°C
Dimension	Dimension	150mm x190mm x 29mm	150mm x190mm x 29mm
	Weight	860g	860g

To find out more about our extensive range of Glorystar solutions, go to www.smarthomegcc.com, or call the office nearest you. For more information, please contact us at info@smarthomegcc.com. Glorystar reserves the right to change or update, without notice, any information contained herein; to change, without notice, the design, construction, materials, processing or specifications of any products; and to discontinue or limit production or distribution of any products. Glorystar, the Glorystar logo, STAR CONTROL and STAROS are either trademarks or registered trademarks of Glorystar Group Limited. All other trademarks are the property of their respective owners.



Ultron Windows Box Basic

Ultron Windows Box



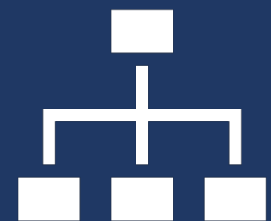
Ultron Windows Box Pro



Commercial Grade



All-in-One



Highly-expandible

Product overview

ULTRON Box Basic and Pro is an aluminum cased, small form factor windows mini PC designed for commercial applications. It is lightweight, compact, portable and easy to set up, with the fanless embedded system, it could be used in retail, automation and security.

ULTRON BASIC

The computer has 1 HDMI and 1 VGA, supporting dual independent playback. 5 × USB 2.0, 1× USB 3.0 with Celeron J1900.

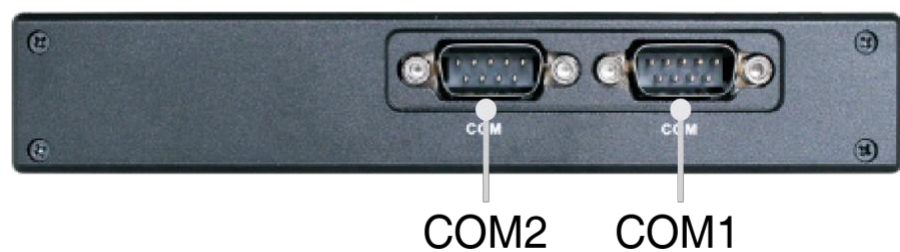
ULTRON PRO

The computer has 1x DP, 1 X HDMI, 4 USB 2.0, 2 X USB3.0, 1 x Type C with a powerful Kabylake, Intel i5 processing power.

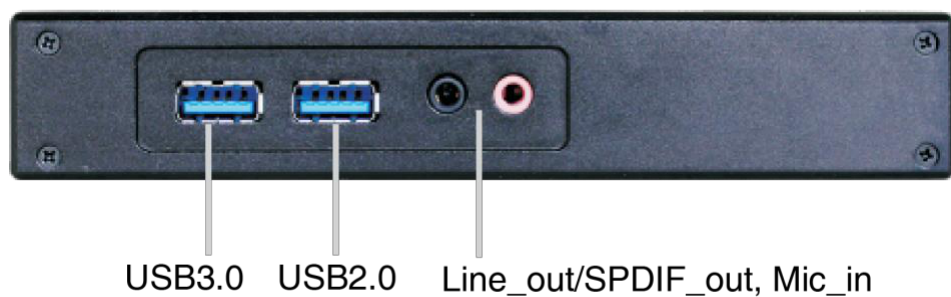
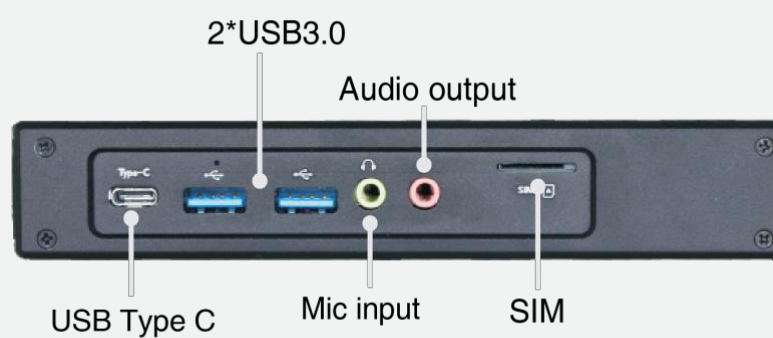
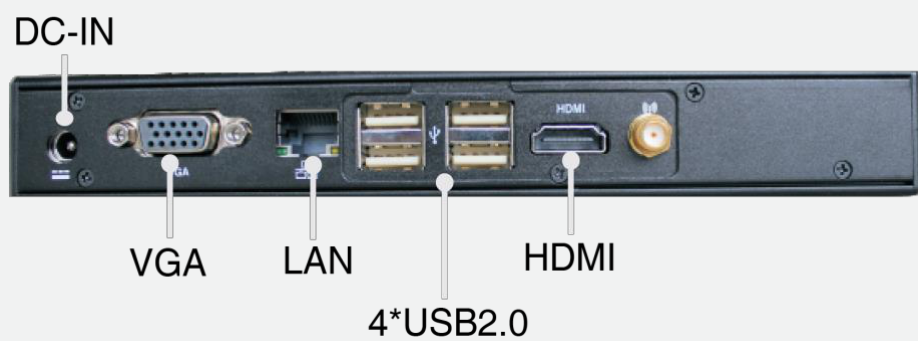
Ultron Windows Box Overview

*see dimensional drawings for details

Ultron Windows Box Basic



Ultron Windows Box Pro



Ultron Windows Box specification

*see dimensional drawings for details

Model		Ultron Windows Box (Basic)	Ultron Windows Box (Pro)
General information	CPU	Celeron J1900(2.00 GHz, Burst Frequency 2.42GHz, quad-Core, TDP 10W)	Supporting Intel 7th Gen. Kabylake-U Processor Intel i5
	System Memory	1 x SO-DIMM slot supports DDR3L up to 8GB RAM	2 x SO-DIMM slot (optional) supports DDR4 up to 32GB RAM
	Ethernet	3 x LAN, RTL8111F, 10Mbps/100Mbps/1000Mbps	2 x LAN (Intel i211)
	Storage	1x SATA (7+15pin), 1x mSATA	M2_S1 (for 2242, SSD, 3G/4G), M2_S2 (for 2242/2280, SSD)
	Expansion	1x SIM slot, 1x mini-PCIe (for WIFI or 3G/4G network)	M2_E1 (for 2230, WIFI and Bluetooth)
	Color	Black	Black
	Display Interface	1x VGA; 1x HDMI	1x DP; 1x HDMI
	COM	2 x COM(RS232)	1x COM
	USB	5x USB2.0, 1x USB3.0	4x USB2.0, 2 x USB 3.0, 1x Type-C (USB3.0, only for voltage output not DP)
	Enclosure Material	Aluminum Alloy	Aluminum Alloy
Audio & Power adaptor	Audio	ALC662 chip, 1x Line_out/ SPDIF_out, 1x Mic in	ALC662 chip, Mic in, Line out
	Wake on LAN	Yes	Yes
	Cooling system	Fanless	Fanless
	Power Supply	1x DC_IN 12/19V	1x DC_IN 19V
	Operating Temperature	-20°C ~ 50°C	-40°C ~ 60°C
Dimension	Dimension	150mm x190mm x 29mm	150mm x190mm x 29mm
	Weight	860g	860g

To find out more about our extensive range of Glorystar solutions, go to www.smarthomegcc.com, or call the office nearest you. For more information, please contact us at info@smarthomegcc.com. Glorystar reserves the right to change or update, without notice, any information contained herein; to change, without notice, the design, construction, materials, processing or specifications of any products; and to discontinue or limit production or distribution of any products. Glorystar, the Glorystar logo, STAR CONTROL and STAROS are either trademarks or registered trademarks of Glorystar Group Limited. All other trademarks are the property of their respective owners.



POS Commercial Media player series

Product overview



Commercial grade



All-in-one Player



Motion sensor

Specification		GMP 156	GMP 185	GMP 215	GMP 238	GMP 271	GMP 321
Screen size		15.6"	18.5"	21.5"	23.8"	27.1"	31.5"
Panel info.	Resolution	1366 x 768			1920 x 1080		
	Brightness	220 cd/m ²	200 cd/m ²	220 cd/m ²	240 cd/m ²	280 cd/m ²	
	Contrast ratio	650:1	1000:1				1200:1
	Aspect Ratio	16:9					
	Active Display Area	344.2 x 195.5 mm	409.8 x 230.4 mm	476.6 x 268.1 mm	527.0 x 296.5 mm	597.9 x 336.3 mm	698.4 x 392.9 mm
	Viewing angle	H:160° / V:160°					
	Video/ Image	Video format	H.265; VP8; RV; WMV; AVS; H.263; MPEG4; Up to 4K x 2K decoding; HTML5; Flash 10				
	Audio format	MP3; WMA; AAC etc.					
	Image format	Jpeg; bmp; png					
Audio	Speaker	2W x 2				5W x 2	
General information	Color	Black					
	I/O	USB 2.0 x 1; SD card slot (up to 16GB)					
	Included in Box	Media player; Power Adaptor; Power cable					
	Sensors	/					
	Consumption	15 - 60W					
	Power input	12V 2-5A					
	Operating Environment	Operating: 32°F to 104°F (0°C to 40°C); Storage: -4°F to 122°F (-20°C to 50°C); Operating: 20%-80%; Storage: 10%-95%					
	Certification	CE; FCC; ROHS					
	VESA	VESA 75			VESA 100		
Dimension	Dimension (L x W x H)	403.76 x 252.76 x 33.5	462 x 282.5 x 37.5	539.11 x 332.21 x 39.75	595.5 x 363.1 x 40.12	662.73 x 400 x 60.5	763.77 x 457.21 x 75.52
	Weight	TBC					
	Box size/each PCs (L x W x H)	TBC					
	Master Box size (L x W x H)	TBC					
	Master Box weight	TBC					
	Pieces/Carton	TBC					

POS Commercial Media Player Series

*see dimensional drawings for details

To find out more about our extensive range of Glorystar solutions, go to www.smarthomegcc.com, or call the office nearest you.

For more information, please contact us at info@smarthomegcc.com

Glorystar reserves the right to change or update, without notice, any information contained herein; to change, without notice, the design, construction, materials, processing or specifications of any products; and to discontinue or limit production or distribution of any products. Glorystar, the Glorystar logo, STAR CONTROL and STAROS are either trademarks or registered trademarks of Glorystar Group Limited. All other trademarks are the property of their respective owners.