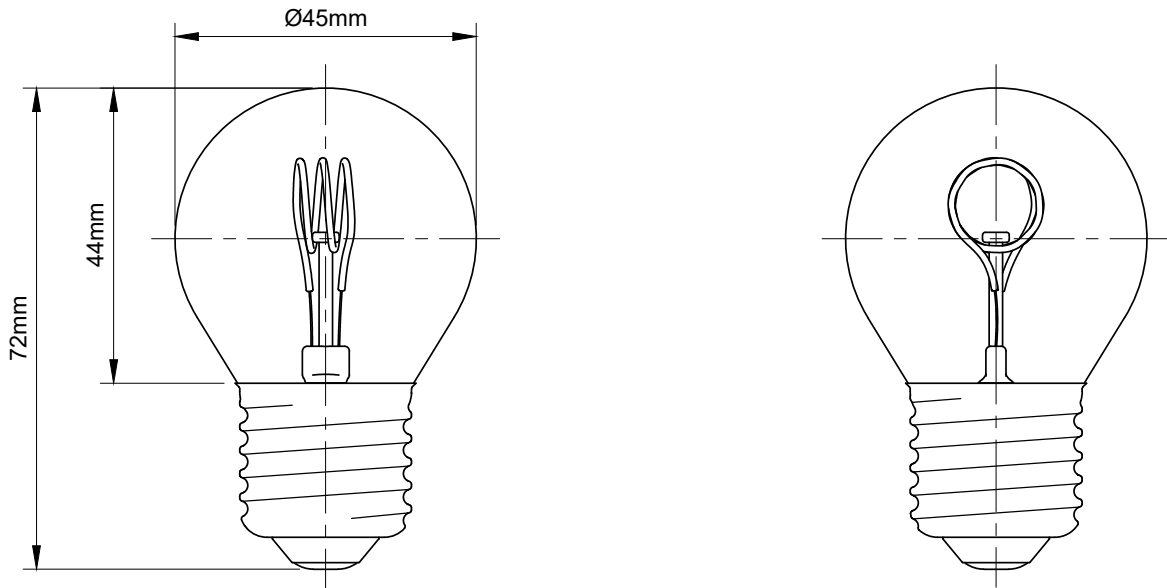


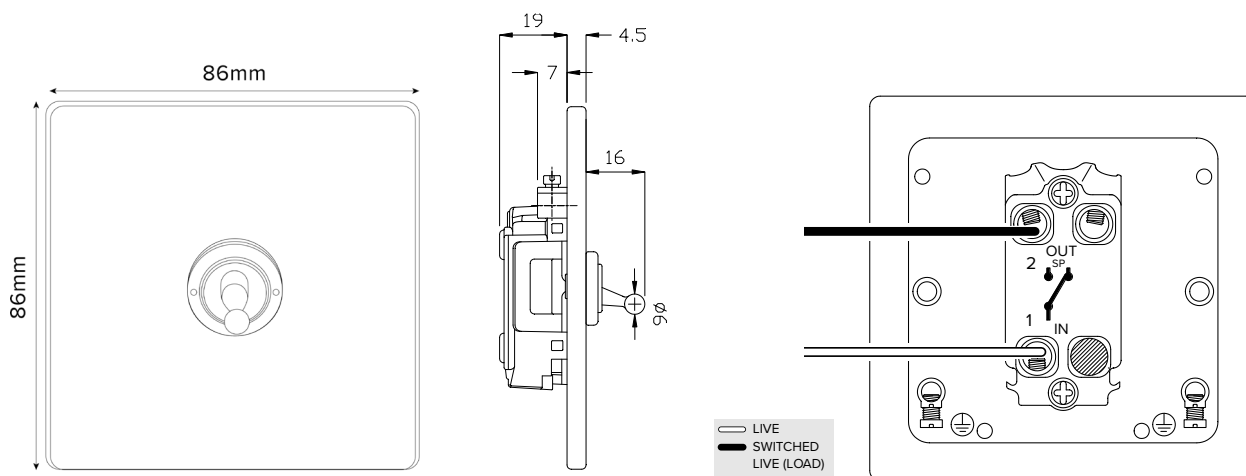
2W G45 LED E27 1800K Sunset White Golf Ball Bulb



TECHNICAL SPECIFICATION

Standard(s)	BS EN62560
Fitting	E27
Bulb Type	G45 LED
Output	2W
Voltage Rating	AC200-240V
Amps	0.01A
Size	H 72mm x Dia. 45mm
Glass Tint	Amber
Colour Temp Kelvin	1800K (Sunset White)
Lumens	80LM
Lifetime	25,000 hrs.
Switch Cycles	30,000
Direct Start	Yes
Dimmable	Yes
Light Angle	360°
Ra - CRI	>94
Maximum Installation Altitude	2000m
Warranty	2 Years
Trademarks	The Soho Lighting Company is a registered trade mark number: UK00003313349, EU017906396, Date: 25 May 2018

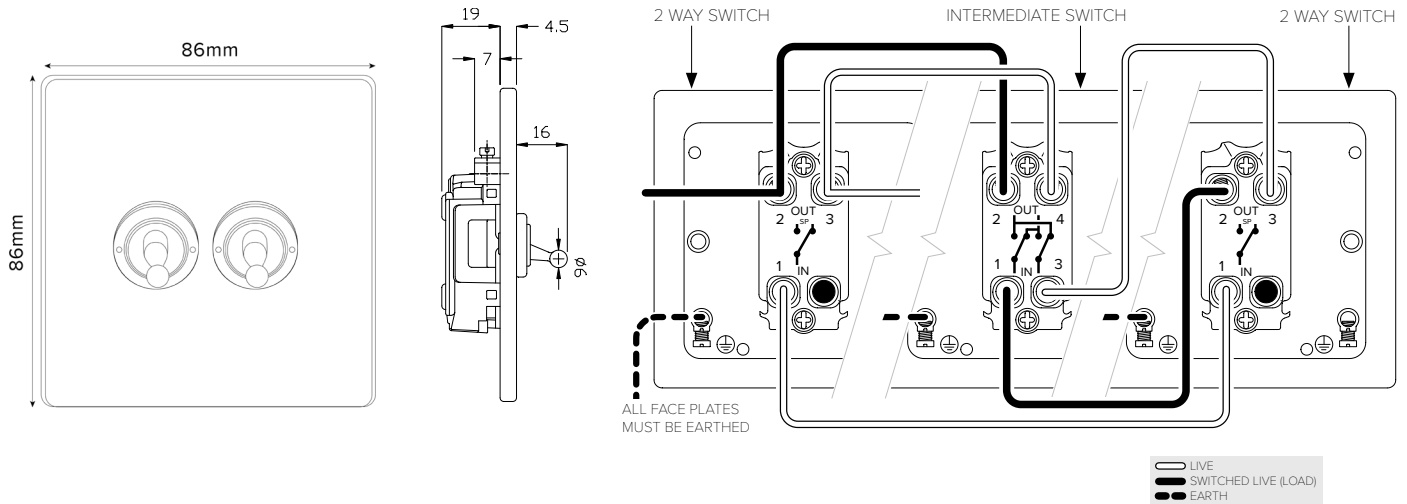
20A 1 Gang 2 Way Toggle Switch - Traditional Plate



TECHNICAL SPECIFICATION

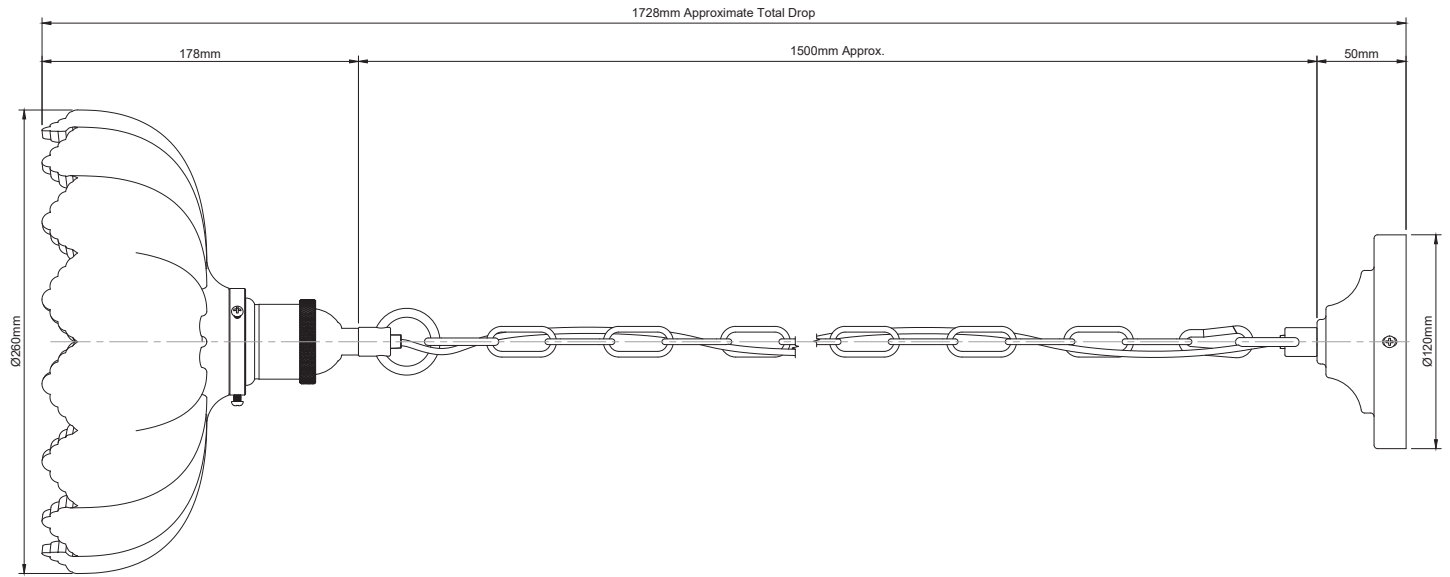
Standard(s)	BS EN 60669-1
Voltage Rating	20 Amp, 250V [~] (20AX – no derating for inductive or fluorescent loads)
Contact Gap	Normal Gap
Mounting Box Depth (Min)	35mm
Terminal Capacity	3 x 2.5mm ² , 2 x 4.0mm ² , 1x 6.0mm ²
Earth Terminal Capacity	3 x 2.5mm ² , 2 x 4.0mm ² , 1x 6.0mm ²
Fixing Centres	60.3mm
Size	86mm x 86mm x 4.5mm (Plate thickness)
Product Class 1	Face plate must be earthed
Ambient Operating Temperature	-5° to +40°C
Recommended Location	Internal Use Only
Maximum Installation Altitude	2000m
IP Rating	IP2XD
Switched Poles	Single
Mains Frequency	50hz - 60hz
Contact Gap Minimum	3mm
Trademarks	The Soho Lighting Company is a registered trade mark number: UK00003313349, EU017906396, Date: 25 May 2018

20A 2 Gang Intermediate Toggle - Traditional Plate



TECHNICAL SPECIFICATION

Standard(s)	BS EN 60669-1
Voltage Rating	20 Amp, 250V~ (20AX – no derating for inductive or fluorescent loads)
Contact Gap	Normal Gap
Mounting Box Depth (Min)	35mm
Terminal Capacity	3 x 2.5mm ² , 2 x 4.0mm ² , 1x 6.0mm ²
Earth Terminal Capacity	3 x 2.5mm ² , 2 x 4.0mm ² , 1x 6.0mm ²
Fixing Centres	60.3mm
Size	86mm x 86mm x 4.5mm (Plate thickness)
Product Class 1	Face plate must be earthed
Ambient Operating Temperature	-5° to +40°C
Recommended Location	Internal Use Only
Maximum Installation Altitude	2000m
IP Rating	IP2XD
Switched Poles	Single
Mains Frequency	50hz - 60hz
Contact Gap Minimum	3mm
Trademarks	The Soho Lighting Company is a registered trade mark number: UK00003313349, EU017906396, Date: 25 May 2018



NOTE: Dimensions and weights may vary slightly due to the hand made nature of this product.

02-PEN446 Flora Glass Pendant Light

Version No	1.0
Standards	EN 60598
Voltage	220-240V~
Frequency AC Current	50Hz
Supply Connection	Terminal Block/Quick Connector
Appliance (Protection) Class (I,II,III)	Class I
Max Bulb Wattage	40w Max
Bulb Fitting	E27
Number of Bulbs	1
Supplied with Bulbs	No
IP Rating	IP20
Total Drop	1728mm
Chain or Cable Length	1500mm
Shade Height	178mm
Shade Width or Diameter	Ø 260mm
Ceiling Rose Height	50mm
Ceiling Rose Diameter	Ø120mm
Full Product Weight	2.230 Kg
Recommended Location	Internal Use Only
Other	Added shade/bulb must not exceed Max 5.1kg
Trademarks	The Soho Lighting Company. Registered trade mark number: UK00003313349, EU017906396, Date: 25 May 2018